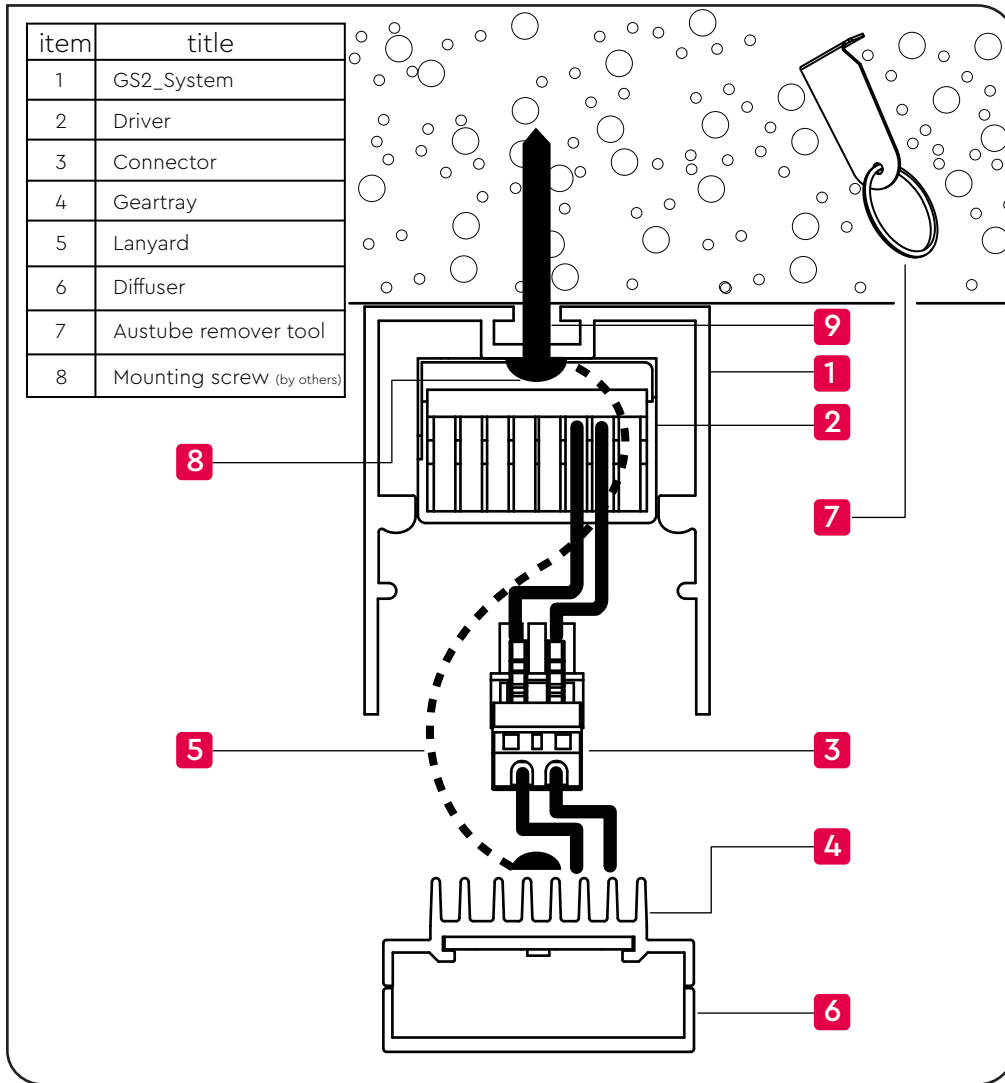
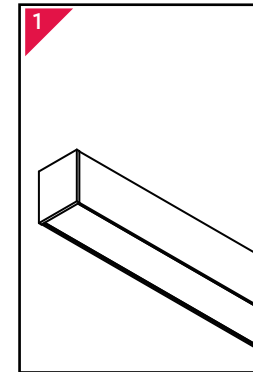


# Surface Mount GSII - Installation Instruction

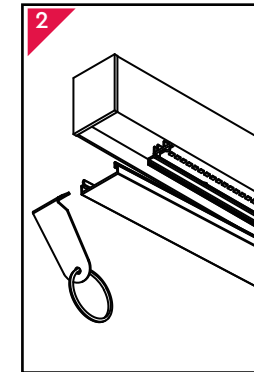


Important note: Install/service by licensed/authorised installer only.

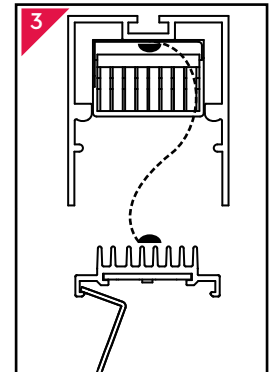


Ensure unit is safe and secured before proceeding

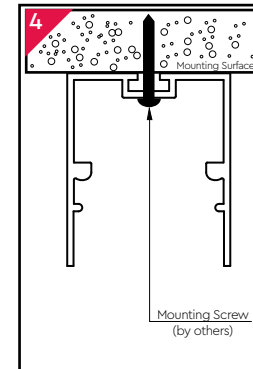
Note: Make sure power is disconnected



Use Austube remover tool to remove diffuser

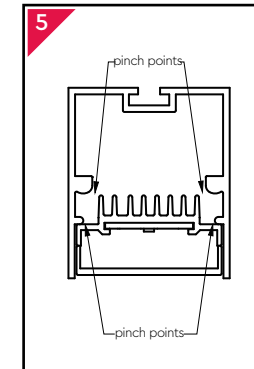


Carefully use Austube remover tool to remove geartray

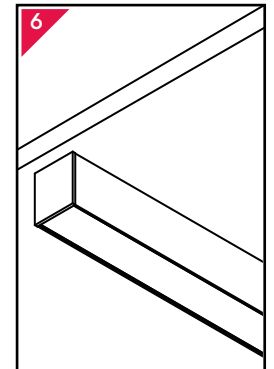


Drill & secure mounting screw to the surface through the luminaire as shown

Note: Refer to layout plan for mounting location



Retrace steps 3 & 2  
Make sure all cables are cleared from pinching and geartray is snapped back in



Make sure system is reconnected and secure to complete